

Yard Duty and Supervision Policy

PURPOSE

To ensure school staff understand their supervision and yard duty responsibilities.

SCOPE

This policy applies to all teaching and non-teaching staff at Chirnside Park Primary School, including education support staff, casual relief teachers and visiting teachers.

POLICY

Appropriate supervision is an important strategy to monitor student behaviour and enables staff to identify and respond to possible risks at school as they arise. It also plays a vital role in helping schools to discharge their duty of care to students.

The Principal is responsible for ensuring that there is a well organised and responsive system of supervision and yard duty in place during school hours, before and after school, and on school excursions and camps and other school activities.

School staff are responsible for following reasonable and lawful instructions from the Principal, including instructions to provide supervision to students at specific dates, times and places. Supervision should be undertaken in a way that identifies and mitigates risks to child safety.

Before and After School

Our grounds are supervised by school staff from 8:45am until 3:45pm. Outside of these hours, school staff will not be available to supervise students.

Parents and carers should not allow their children to attend Chirnside Park Primary school unattended outside of these hours. Families are encouraged to contact the School Office on 9727 3466 or refer to the schools website for more information about the before and after school care facilities available to our school community.

If a student arrives at school before supervision commences at the beginning of the day, and is not being supervised by a parent or guardian, the Principal or nominee staff member will, as soon as practicable, follow up with the parent/carer to:

- advise of the supervision arrangements before school
- request that the parent/carer make alternate arrangements.

If a student is not collected before supervision finishes at the end of the day, the Principal or nominee staff member will consider whether it is appropriate to:

- attempt to contact the parents/carers.
- attempt to contact the emergency contacts.
- place the student in an out of school hours care program (if available).
- contact Victoria Police and/or the Department of Health and Human Services (Child Protection) to arrange for the supervision, care, and protection of the student.

During a pandemic, such as the 2020 COVID-19 pandemic, government schools are required to comply with the Department's Operations Guides applicable to that specific pandemic.

The Department updates the Operations Guides as required during a pandemic based on advice from the Department of Health and Human Services (DHHS). These Operations Guides cover procedures for supervision students.

The current COVID-19 Operations Guide includes a COVID Safe Plan for Schools that ensures schools remain safe environments. Please contact the principal to view the operations guide.

Yard Duty Equipment

School staff must:

- wear a provided safety/hi-vis vest whilst on yard duty. Safety/hi-vis vests will be stored in the dedicated basket at the entrance to the staffroom
- carry the yard duty first aid bag at all times during supervision. The yard duty first aid bag will be stored in the dedicated basket at the entrance to the staffroom.
- Carry their mobile phone with them whilst on duty.
- Be familiar with the yard duty information pack containing student health and safety information

Yard duty equipment must be returned after the period of supervision or handed to the relieving staff member.

Yard duty responsibilities

Staff who are rostered for yard duty must remain in the designated area until they are replaced by a relieving staff member.

During yard duty, supervising school staff must:

- methodically move around the designated zone ensuring active supervision of all students

- where safe to do so, approach any unknown visitor who is observed on school grounds without a clear legitimate purpose.
- ensure students remain in their designated year level zones (Prep playground and 5/6 area)
- be alert and vigilant
- intervene immediately if potentially dangerous or inappropriate behaviour is observed in the yard
- enforce behavioural standards and implement appropriate consequences for breaches of safety rules, in accordance with any relevant disciplinary measures set out in the school's Student Engagement policy
- ensure that students who require first aid assistance receive it as soon as practicable
- log any incidents or near misses as appropriate

If being relieved of their yard duty shift by another staff member (for example, where the shift is 'split' into 2 consecutive time periods), the staff member must ensure that a brief, but adequate verbal 'handover' is given to the relieving staff member in relation to any issues which may have arisen during the first shift.

If the supervising staff member is unable to conduct yard duty at the designated time, they should contact a member of the executive leadership team with as much notice as possible prior to the relevant yard duty shift to ensure that alternative arrangements are made.

If the supervising staff member needs to leave yard duty during the allocated time, they should contact a member of the Leadership Team but should not leave the designated area until the relieving staff member has arrived in the designated area.

If the relieving staff member does not arrive for yard duty, the staff member currently on duty should send a message to the office and not leave the designated area until a relieving staff member has arrived.

Students will be encouraged to speak to the supervising yard duty staff member if they require assistance during recess or lunchtime.

Classroom

The classroom teacher is responsible for the supervision of all students in their care during class.

If a teacher needs to leave the classroom unattended at any time during a lesson, they should first contact their neighbouring classroom teacher, or office for assistance. The teacher should then wait until a replacement staff member has arrived at the classroom before leaving.

School Activities, Camps and Excursions

The Principal and leadership team are responsible for ensuring that students are appropriately supervised during all school activities, camps and excursions, including when external providers are engaged to conduct part or all of the activity. Appropriate supervision will be planned for school activities, camps and excursions on an individual basis, depending on the activities to be undertaken and the level of potential risk involved, and will follow the supervision requirements in the Department of Education and Training [Excursions Policy](#).

Digital Devices and Virtual Classroom

Chirnside Park Primary School follows the Department's [Cybersafety and Responsible Use of Technologies Policy](#) with respect to supervision of students using digital devices.

We will also ensure appropriate supervision of students participating in remote and flexible learning environments while on school site. In these cases, students will be supervised by their classroom teacher whilst accessing spaces adjacent to their classroom environment (Gallery Spaces), or normal classroom environment.

Students Requiring Additional Supervision Support

Sometimes students will require additional supervision, such as students with disability or other additional needs. In these cases, the Principal or delegate will ensure arrangements are made to roster additional staff as required. This may include on yard duty, in the classroom or during school activities.

Supervision of Student in Emergency Operating Environments

In emergency circumstances our school will follow our Emergency Management Plan, including with respect to supervision.

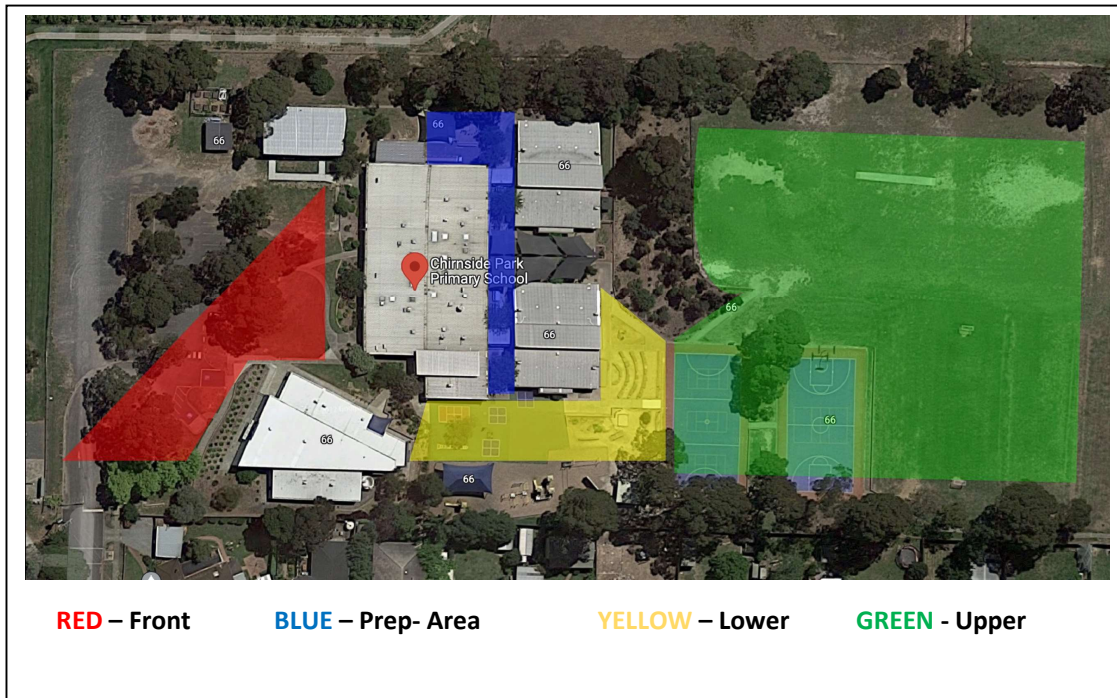
In the event of any mandatory period of remote or flexible learning our School will follow the operations guidance issued by the Department.

Other Areas/Times Requiring Supervision

If students need to access toilet facilities during class time, they will speak to their classroom teacher before travelling in pairs to the toilet **Yard duty zones**

The designated yard duty areas for our school (as at Term 2, 2024) are:

Zone	Area
Front	Carpark area/main entrance
Upper	Basketball/Netball courts and Oval
Prep – 2 Area	External are around the Prep and 1/2 Building, Prep playground through to main playground (including student bathrooms)
Lower	Netball court to 5/6 Building



COMMUNICATION

This policy will be communicated to our school community in the following ways:

- Included in staff induction processes
- Discussed at staff briefings or meetings, as required
- Included in our staff handbook
- Made available in hard copy from school administration upon request

Information for parents and students on supervision before and after school is available on our school website and parent reminders are sent at the beginning of each term in our school newsletter.

FURTHER INFORMATION AND RESOURCES

- the Department’s Policy and Advisory Library (PAL):
 - [Child Safe Standards](#)
 - [Cybersafety and Responsible Use of Technologies](#)
 - [Duty of Care](#)
 - [Excursions](#)
 - [Supervision of Students](#)
 - [Visitors in Schools](#)

POLICY REVIEW AND APPROVAL

Policy last reviewed	March 2024
Approved by	School Council